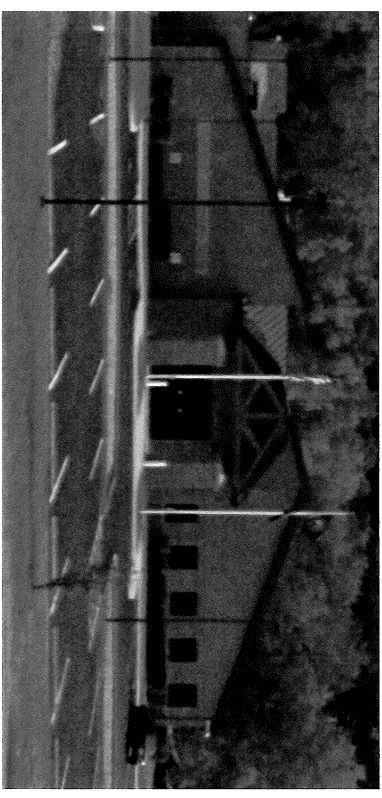


NEW JUSTICE CENTER

- Adjacent to LEC – with a connecting link
- Similar architecture to LEC
- SR 46 access
- Parking study – 3 facilities
- Flexibility and adaptability of floor plan
- Expansion opportunities at LEC and Justice Center
- Sustainable materials and systems
- Dignity of facility



BROWN COUNTY
JUSTICE CENTER STUDY

**Decisions for
multiple
generations**

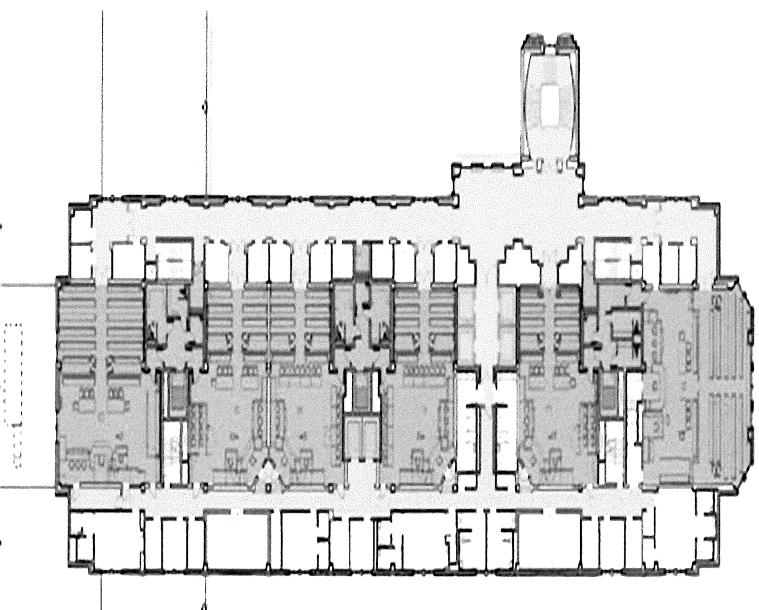
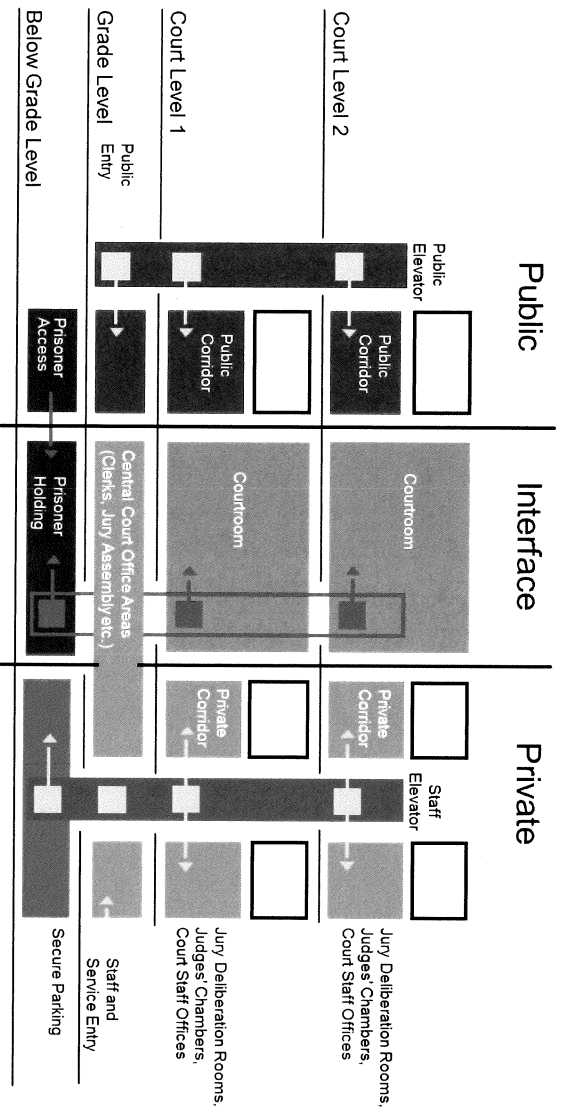


Brown County
INDIANA

NEW JUSTICE CENTER

BROWN COUNTY
JUSTICE CENTER STUDY

- Three levels of Justice design circulation



Brown County
INDIANA

HISTORIC COURTHOUSE



Brown County
INDIANA



PRELIMINARY CONCEPTS – COURTHOUSE REPURPOSE

- Preserving history is a primary goal and objective
- Integrity of courthouse is to be maintained
- Maintain as a County owned property
- Capital improvement projects to renovate / restore
- Energy efficiency / performance
- Adaptive Reuse of Courthouse for:
 - Commissioners and Council
 - Meeting rooms
 - Areas to be identified – public input and support

BROWN COUNTY
JUSTICE CENTER STUDY

"The preservation and appropriate maintenance of a major historic landmark like a county courthouse can also have a significant impact of the value of nearby private property."

INDIANA COURTHOUSE PRESERVATION ADVISORY COMMISSION
Indiana's Historic Courthouses
RE-INVESTING IN COMMUNITY TREASURES
AUGUST 2011



Brown County
INDIANA



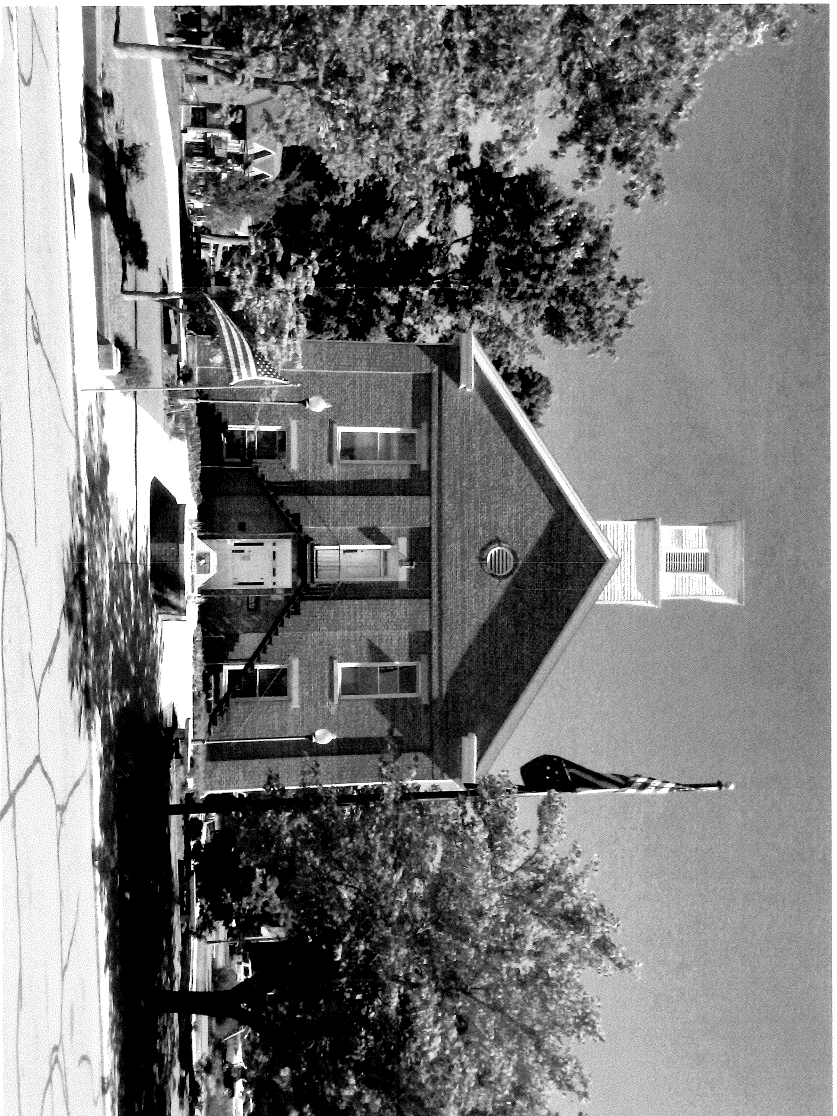
Respect and Preserve History



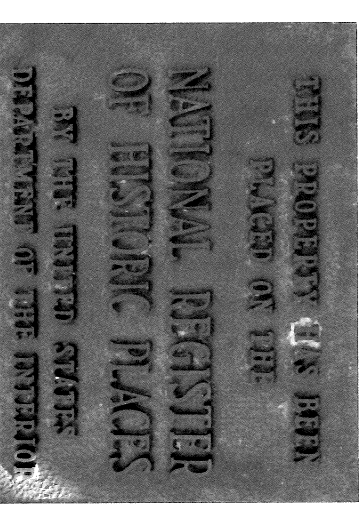
- **Americans with Disability Act (ADA) Self Evaluation Findings**
 - Signage in general does not provide Braille or raised text
 - Means of egress signage
 - Several doors exhibit inadequate maneuvering space, closing speed and operating force, and do not maintain 10” smooth at bottom of door
 - Public restrooms
 - Jury restrooms
 - Counters are not accessible
 - Electrical outlets are below the acceptable reach range
 - Existing stair exhibits non-compliant riser heights, landings, and handrails
 - Elevator requires adjustment to door sensors, car control buttons, Braille features, and audible signals. Car width is marginally non-compliant.
 - Water fountain does not meet requirements for standing persons and protrudes into hallway.



PRELIMINARY CONCEPTS – COURTHOUSE REPURPOSE



BROWN COUNTY
JUSTICE CENTER STUDY

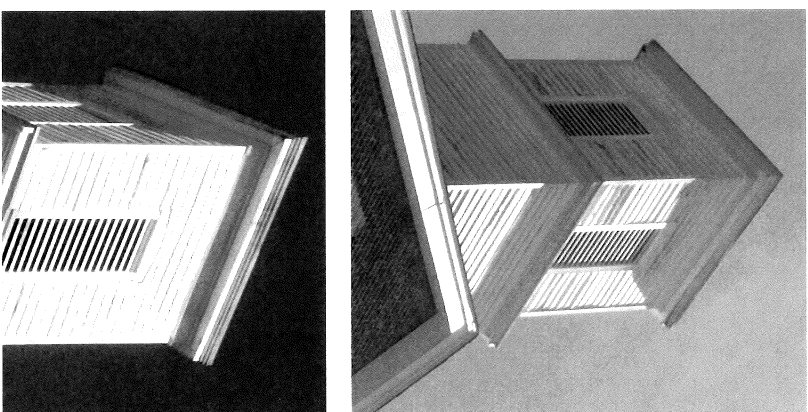
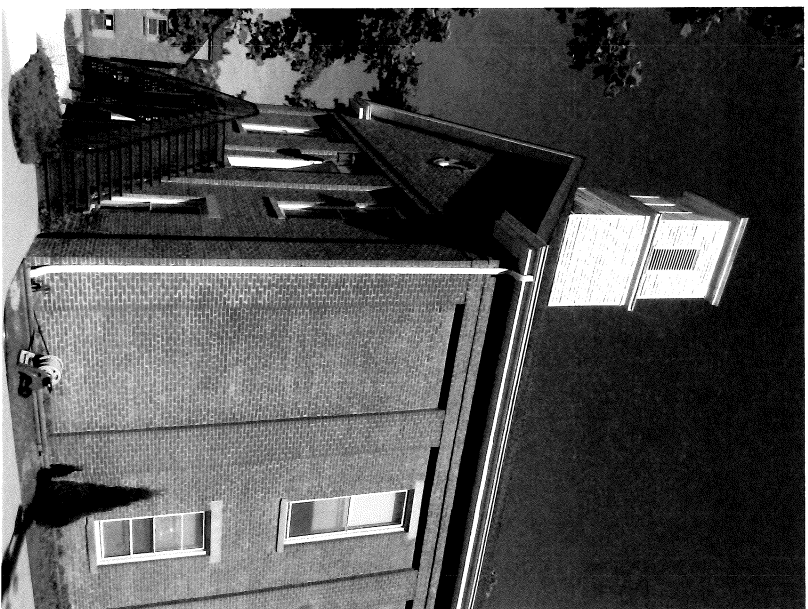


Brown County
INDIANA

Respect and Preserve History



PRELIMINARY CONCEPTS – COURTHOUSE REPURPOSE



BROWN COUNTY
JUSTICE CENTER STUDY



Brown County
INDIANA



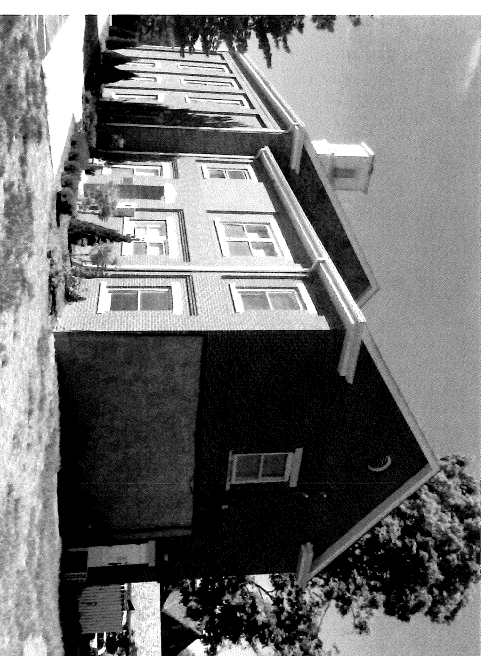
Respect and Preserve History

IDLZ
ARCHITECTURE • ENGINEERING • PLANNING
SURVEYING • CONSTRUCTION SERVICES

PRELIMINARY CONCEPTS – COURTHOUSE REPURPOSE



BROWN COUNTY JUSTICE CENTER STUDY

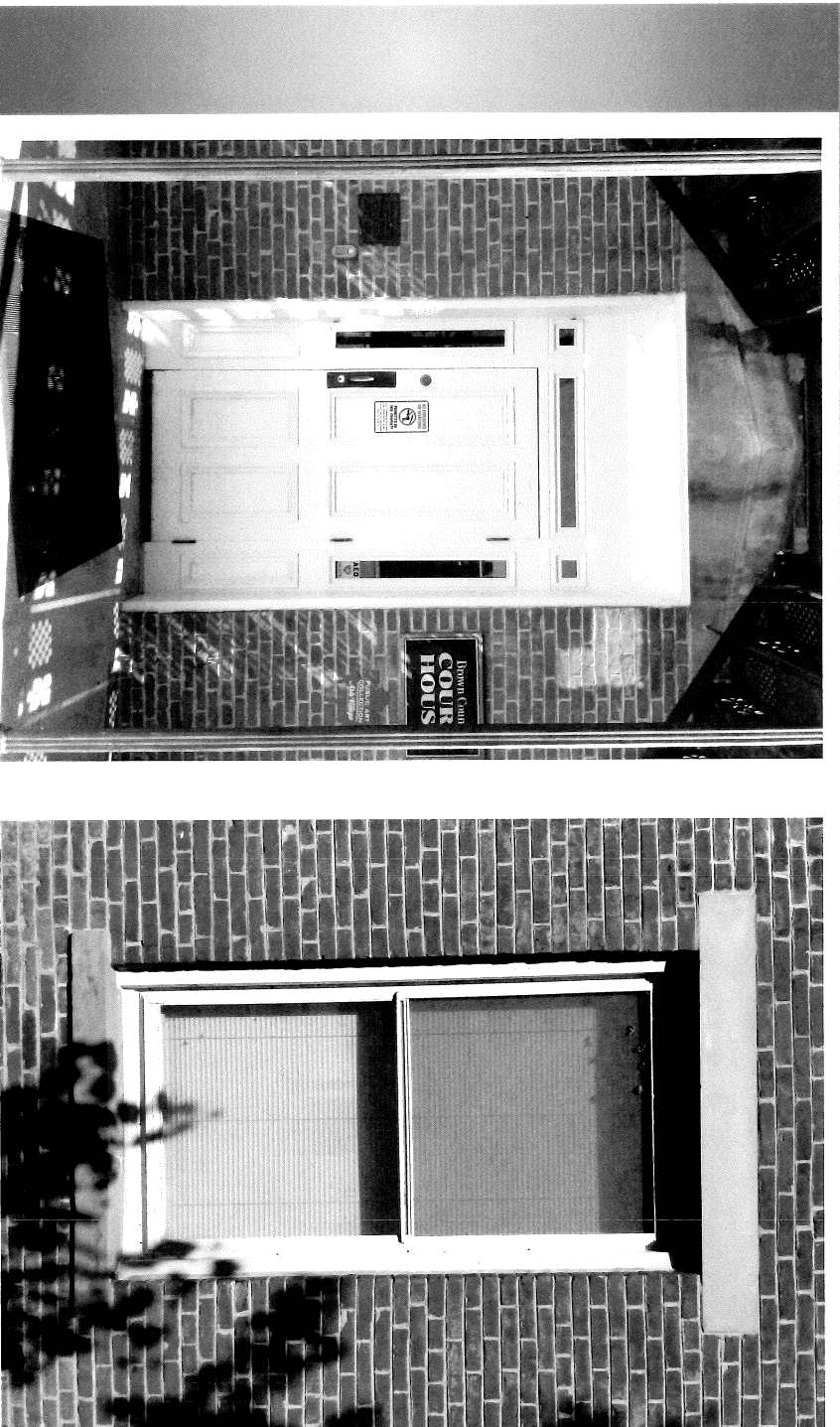


Brown County
INDIANA

Respect and Preserve History



PRELIMINARY CONCEPTS – COURTHOUSE REPURPOSE



BROWN COUNTY
JUSTICE CENTER STUDY

*Openings are
some of the
most
important
design features*

Historic significance



Brown County
INDIANA

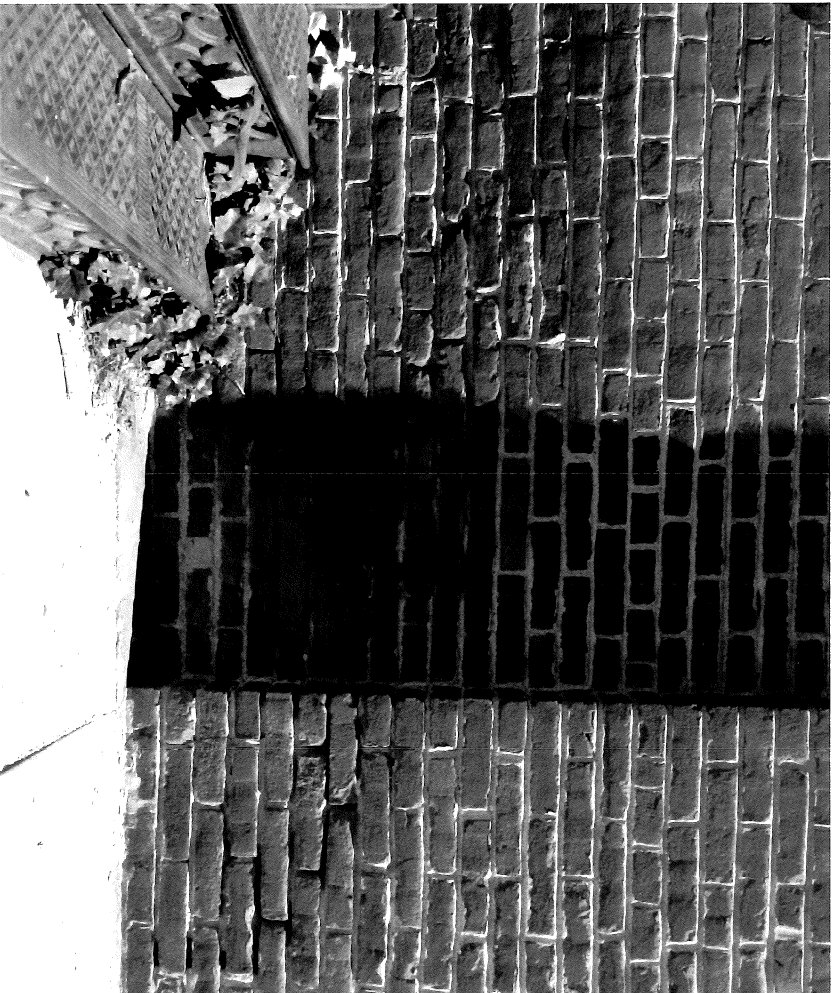


Respect and Preserve History



PRELIMINARY CONCEPTS – COURTHOUSE REPURPOSE

BROWN COUNTY
JUSTICE CENTER STUDY



Brown County
INDIANA



Respect and Preserve History



PRELIMINARY CONCEPTS – COURTHOUSE REPURPOSE

BROWN COUNTY
JUSTICE CENTER STUDY



Brown County
INDIANA

Respect and Preserve History



PRELIMINARY CONCEPTS – COURTHOUSE REPURPOSE

BROWN COUNTY
JUSTICE CENTER STUDY



Brown County
INDIANA

Respect and Preserve History



PRELIMINARY CONCEPTS – COURTHOUSE REPURPOSE

BROWN COUNTY
JUSTICE CENTER STUDY



Brown County
INDIANA

Respect and Preserve History



PRELIMINARY CONCEPTS – COURTHOUSE REPURPOSE

BROWN COUNTY
JUSTICE CENTER STUDY



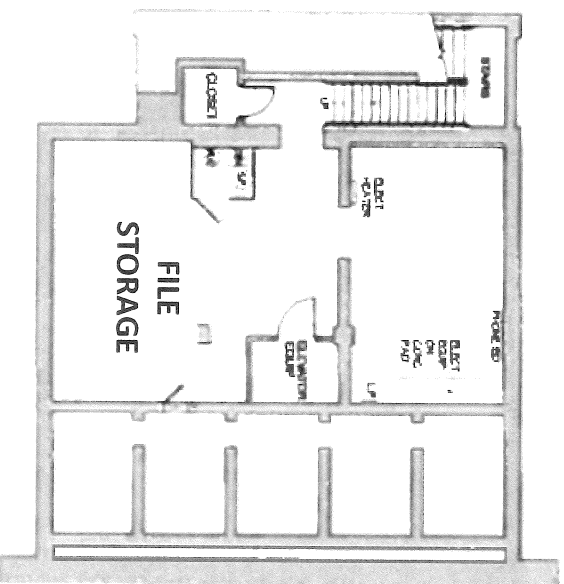
Brown County
INDIANA

Respect and Preserve History



COURTHOUSE – EXISTING BASEMENT FLOOR PLAN

BROWN COUNTY
JUSTICE CENTER STUDY



Brown County
INDIANA



Approximately 894 GSF

